

## SCHEDA TECNICA Bottiglia PET 50 cl ST

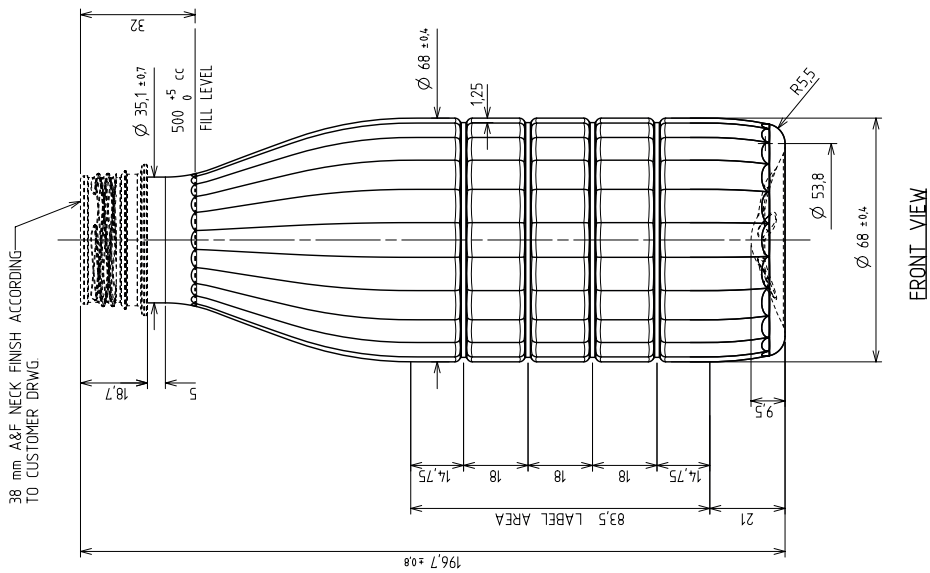
### CARATTERISTICHE TECNICHE

- TIPO MATERIALE:	Resina PET
- COLORE:	Clear o White
- PESO:	22 o 24 gr
- APPLICAZIONE:	Prodotti lattiero caseario
- IMBOCCATURA:	A&F mm 38
- ALTEZZA BOTTIGLIA:	196,7 mm +/- 2
- LARGHEZZA BOTTIGLIA:	68 mm +/-0,75
- DISEGNO TECNICO:	C005377

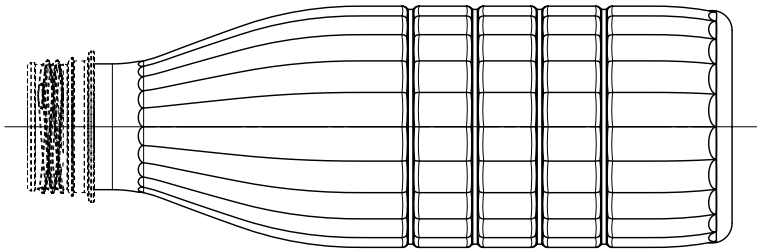
### IMBALLAGGIO

- PALLET LEGNO:	cm 100x120
- QUANTITÀ PALLET:	> 5 strati > 1.445 pz > 6 strati > 1.734 pz
- TRASPORTO:	motrice > 28-32 pallet bilico > 52 pallet granvolume > 60 pallet

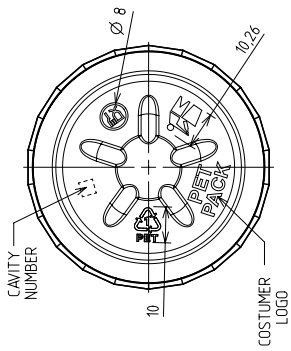
*Nota: I valori indicati sono da considerarsi orientativi in quanto potenzialmente variabili in base alle caratteristiche della materia prima PET e/o delle caratteristiche dell'impianto di produzione e/o delle condizioni specifiche di applicazione e/o delle condizioni ambientali.*



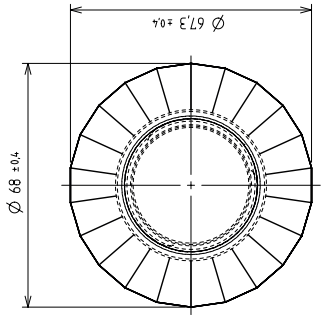
FRONT VIEW



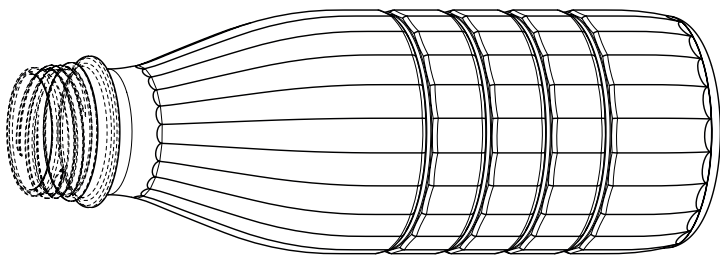
RIGHT VIEW



BOTTOM VIEW



TOP VIEW



3D VIEW

DESCRIPTION <b>0.5 L FLAT BASE BOTTLE</b>	MATERIAL:	PET	BOTTLE WEIGHT FOR WATER VOLUMES AND:	217 g
	FINISH WEIGHT:		58 g	
DIMENSIONS OBTAINED BY UNAUTHORIZED PERSONS THIS DRAWING IS PROPERTY OF SIPA S.p.A. AND IS NOT TO BE USED OR REPRODUCED BY UNAUTHORIZED PERSONS		DATE:	22/02/2011	OVERFLOW:
DRAWING N°:		DESIGNED BY:	M. POLLINI	527.0 0,±5 cc
DRAWING N°:		CHECKED BY:	F. AZZALINI	
DRAWING N°:		APPROVED BY:	F. AZZALINI	



PLASTIC PACKAGING SYSTEM  
VITTORIO VENEZI (TV) - ITALY

C005377\_02